

# **Educational and outreach activities by the JSN**

**Vice Chair of the International committee of JSN**

**Chair of APSN CME**

**Shunya Uchida, MD, PhD.**

# JSN activities

## ■ Education

## ■ Registry

➔ J-RBR

➔ J-KDR

## ■ CKD initiatives

➔ Guidebook and guideline

➔ Cohort study

## ■ Global outreach

➔ AFCKDI

➔ Asia young nephrologists seminar (アジアのタ  
べ)

➔ APSN CME (including AINF)

# Educational section of the JSN

## 1. Board Committee (10 members + 2 office support Drs)

- 1) Board Examination (MCQ)
- 2) Evaluation of experienced cases (case reports)
- 3) Certification of Nephrologist and Attending Nephrologist
- 4) Certification of educational facilities

## 2. Educational Committee for pre and post graduates (90 mbs)

- 1) Seminar for students (twice a year)
- 2) Nephrology Seminar for Residents (twice a year)
- 3) revision of curriculum
- 4) Seminar for trainee (once a year)
- 5) Self-training program (once a year)
- 6) Continuous medical education (planning)



**Nephrology Seminar for Residents**

# **Nephrology Seminar for Residents (twice a year)**

## **The first day**

- 1. Physical examination**
- 2. Electrolytes**
- 3. Renal pathology**
- 4. Career planning**
- 5. Welcome party**

## **The second day**

- 1. Acid base balance**
- 2. Secondary nephropathy**
- 3. Lunch on seminar**
- 4. CKD or AKI**

## **Style:**

**Short lectures and group discussion with many task forces (Residents can meet young nephrologists and professors)**



**About 150 residents attend the seminar.  
Group discussion:  
5-6 residents per taskforce**

**Many young residents and  
leaders of JSN**

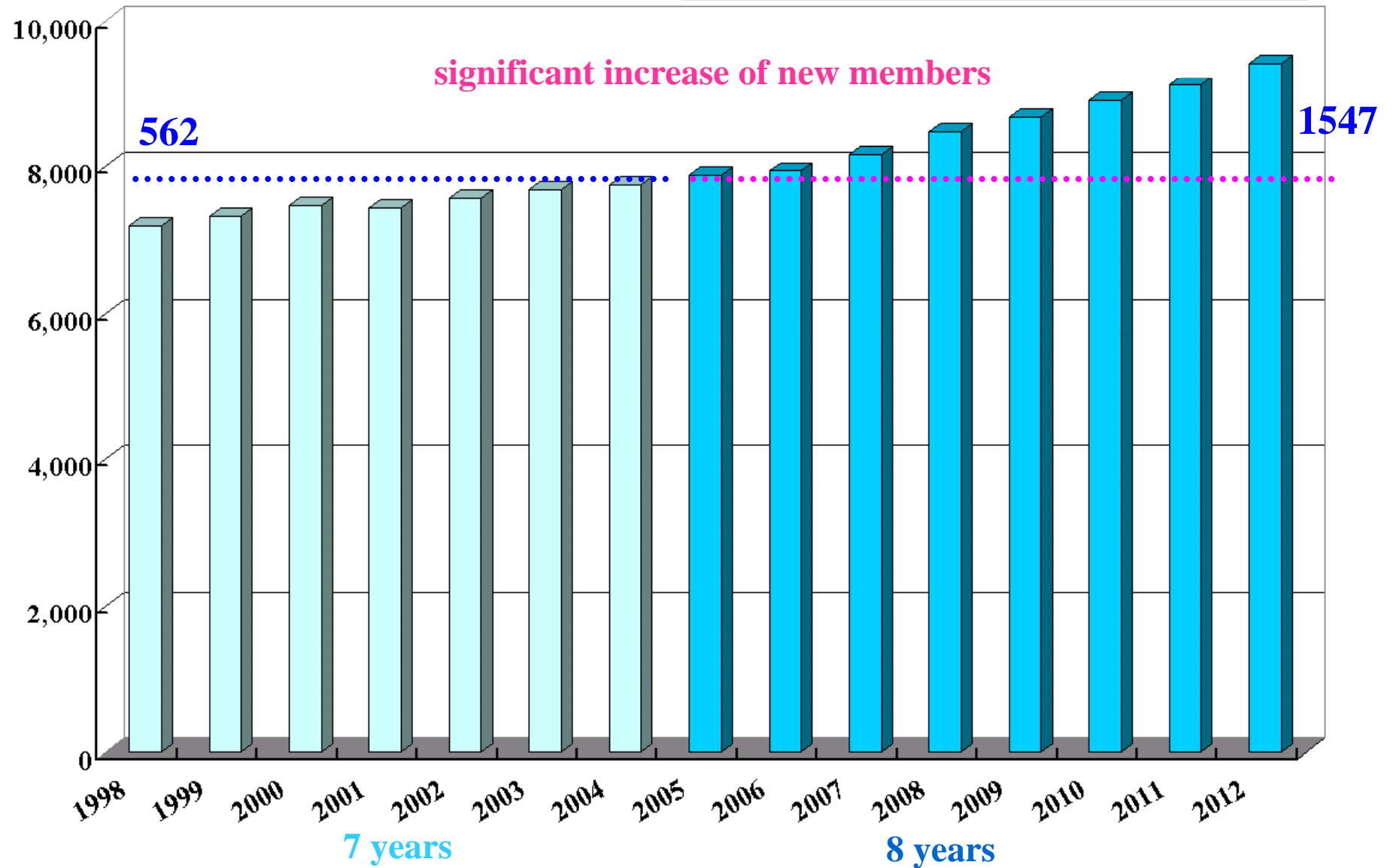


	<b>Year</b>	<b>Venue</b>	<b>Professor</b>	<b>Attendee</b>	<b>Member</b>	<b>New member</b>
1	2005.8	Tokyo	Imai H	107	11	26
2	2005.11	Okinawa	Iseki	65	6	16
3	2006.8	Tokyo	Uchida	113	12	43
4	2006.11	Okinawa	Iseki	78	5	12
5	2007.8	Tokyo	Watanabe	150	33	27
6	2008.2	Osaka	Imai E	102	31	24
7	2008.8	Tokyo	Yamagata	105	34	22
8	2009.2	Nagoya	Matsuo	124	42	24
9	2009.9	Tokyo	Tomino	113	21	18
10	2010.2	Tokyo	Kimura	120	30	8
11	2010.8	Hokkaido	Kawada	104	25	17
12	2011.2	Tokyo	Nitta	127	41	27
13	2011.8	Tokyo	Umemura	129	31	6
14	2012.2	Kobe	Nishi	139	20	4
15	2012.8	Tokyo	Kusano	155	24	9
16	2013.2	Tokyo	Akizawa	147	44	5
			<b>Total</b>	<b>1,878</b>	<b>410</b>	<b>288</b>

# Outcome of Nephrology Seminar for Residents

Total number of JSN members

Nephrology Seminar for Residents



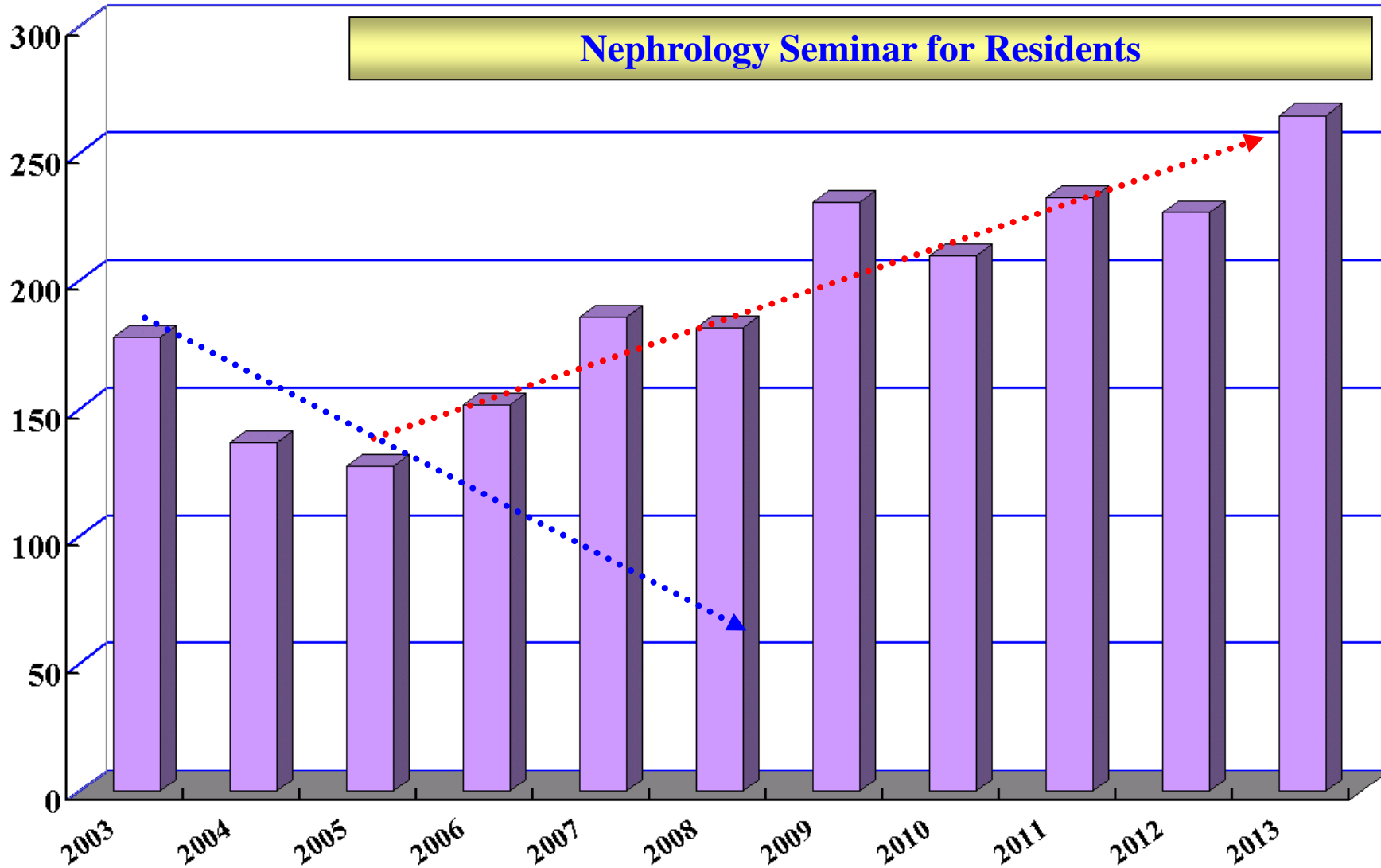


# Increasing number of new Board certified Nephrologists

Number of new-  
Board certified Nephrologist

Seminar for trainee

Nephrology Seminar for Residents





**Japan Renal Biopsy Registry/Kidney  
Disease Registry**

# **Japan Renal Biopsy Registry(J-RBR) Japan Kidney Disease Registry (J-KDR)**

**Since 2007**

**Principal investigator: Hirofumi Makino (President of JSN)**

**Takashi Taguchi**

**Hitoshi Yokoyama**

**Renal Pathology Committee:**

**Takashi Taguchi, Kensuke Joh**

**Michio Nagata, Takao Saito, Seiichi Matsuo, Shinichi Nishi,**

**Motoshi Hattori, Masataka Honda, Norishige Yoshikawa**

**Kidney Disease Registry Committee:**

**Hitoshi Yokoyama, Hiroshi Satoh,**

**Yuichiro Fukasawa, Tetsuya Kawamura, Hiroyuki Iida, Makoto Higuchi,**

**Yukio Yuzawa, Kunio Morozumi, Atsushi Fukatsu, Kazumasa Oka,**

**Tamaki Sasaki, Hideyasu Kiyomoto, Kazuhiko Tsuruya, Yukimasa Koda,**

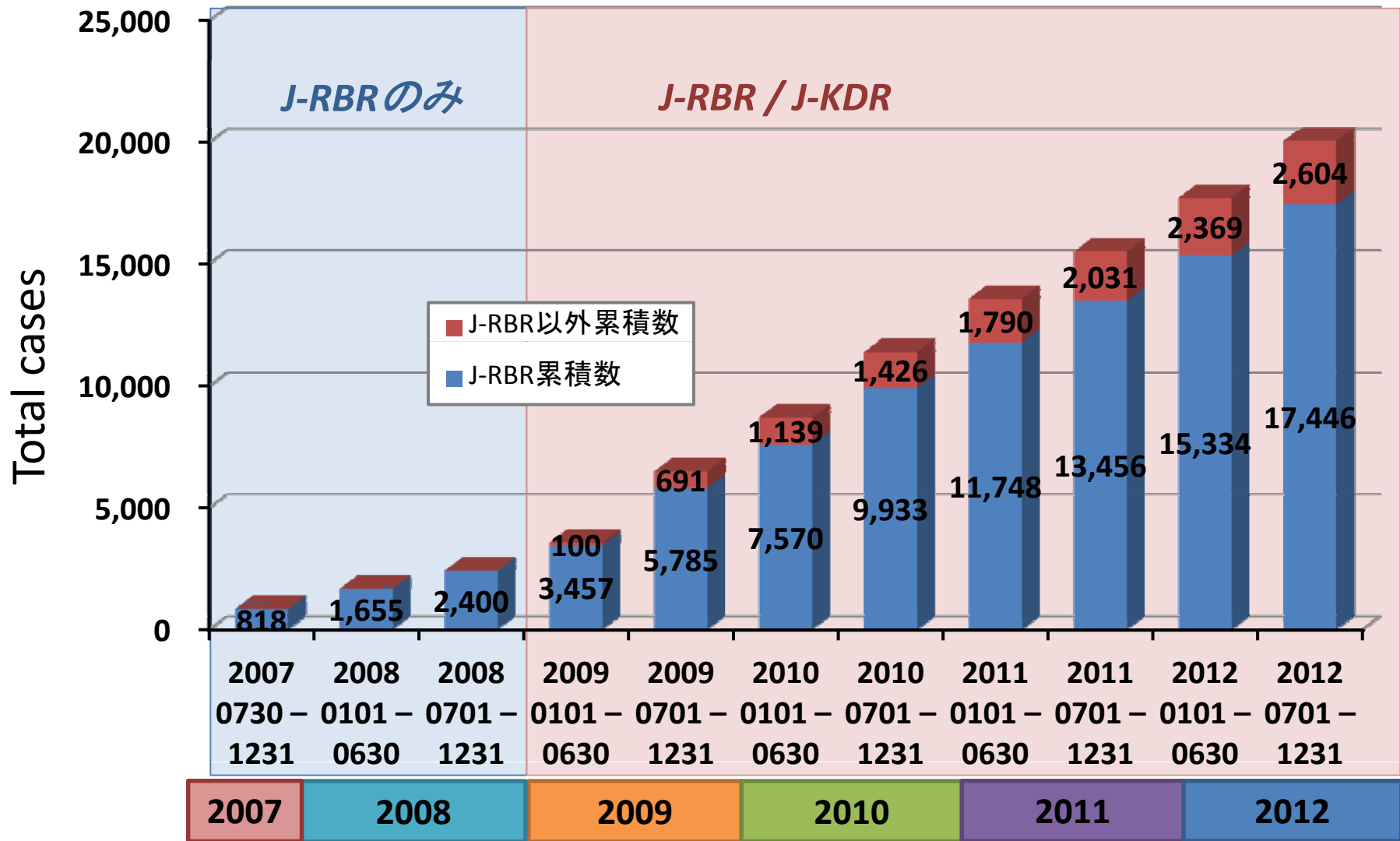
**Shoji Kagami,**

**Adviser for Clinical Epidemiology: Yutaka Kiyohara**

**Secretary General: Hitoshi Sugiyama**

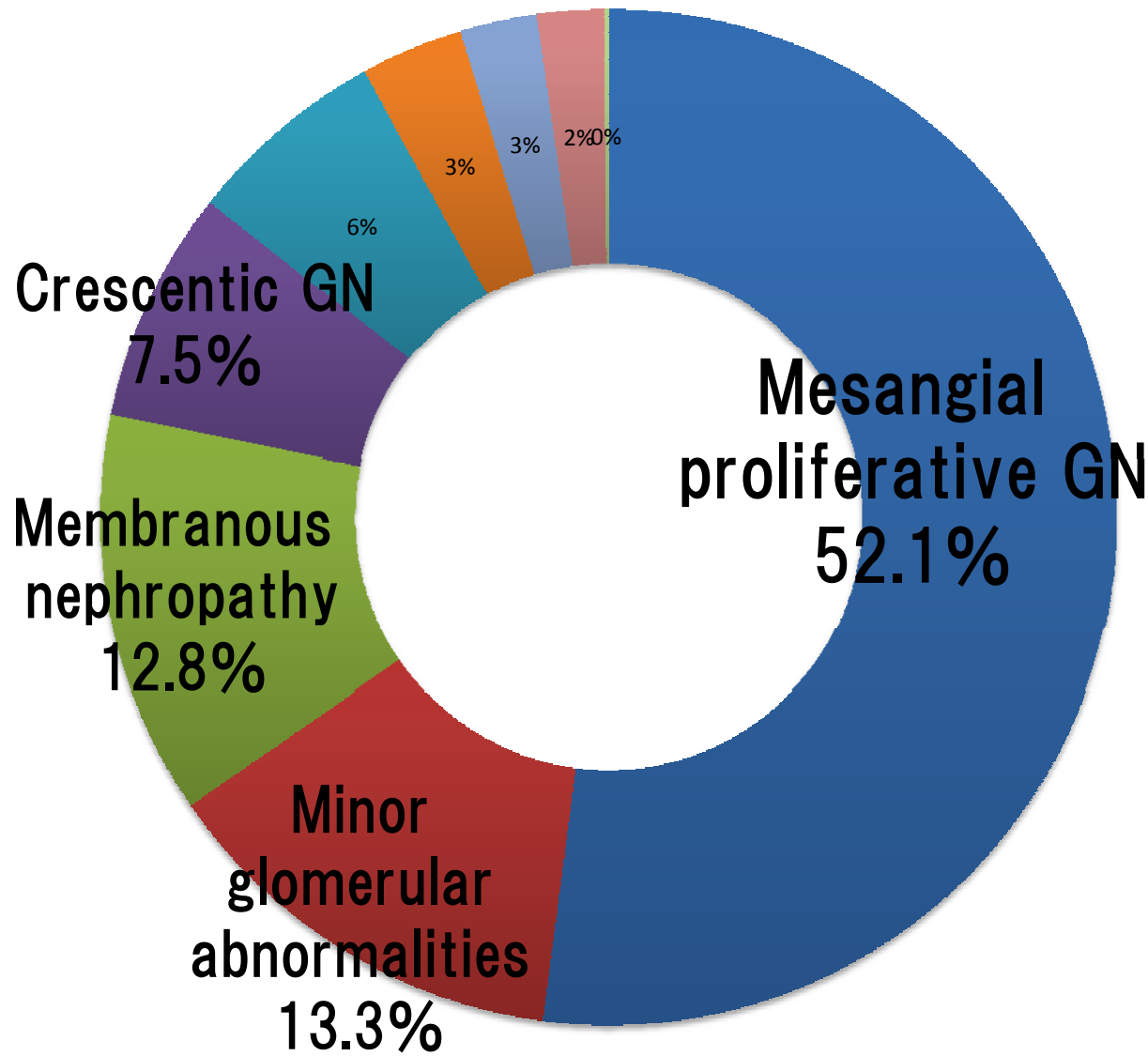
# J-RBR/J-KDR

Registered cases: 20,050 as of Dec 31, 2012



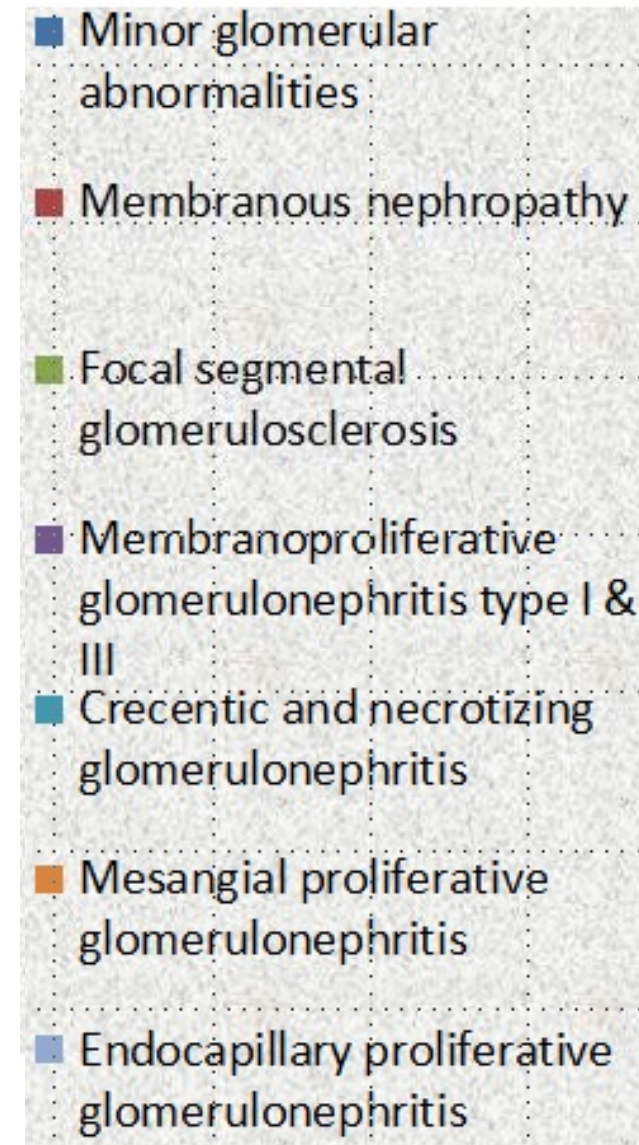
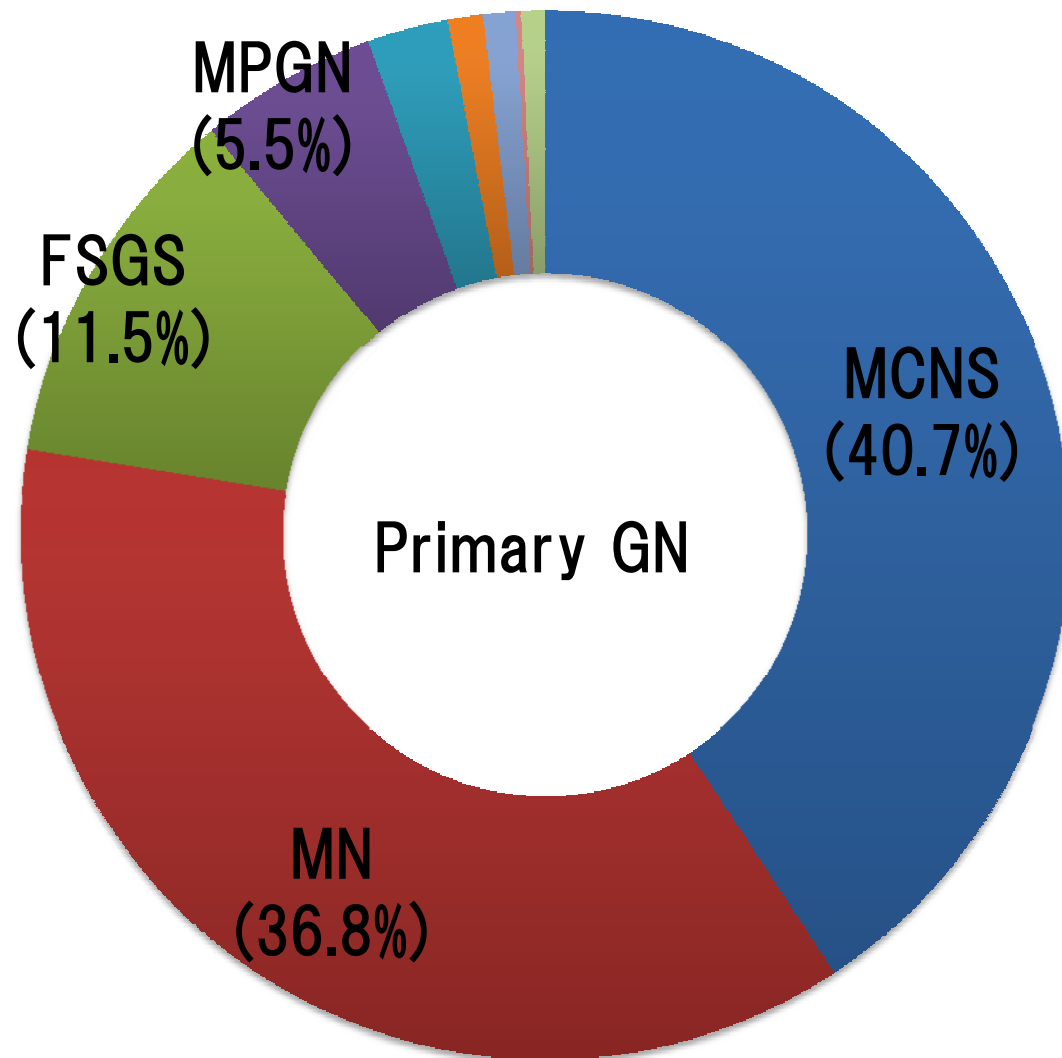
# Pathological diagnosis (J-RBR 2007-2010 n=6,343)

Glomerular disease  
(6,343 cases)

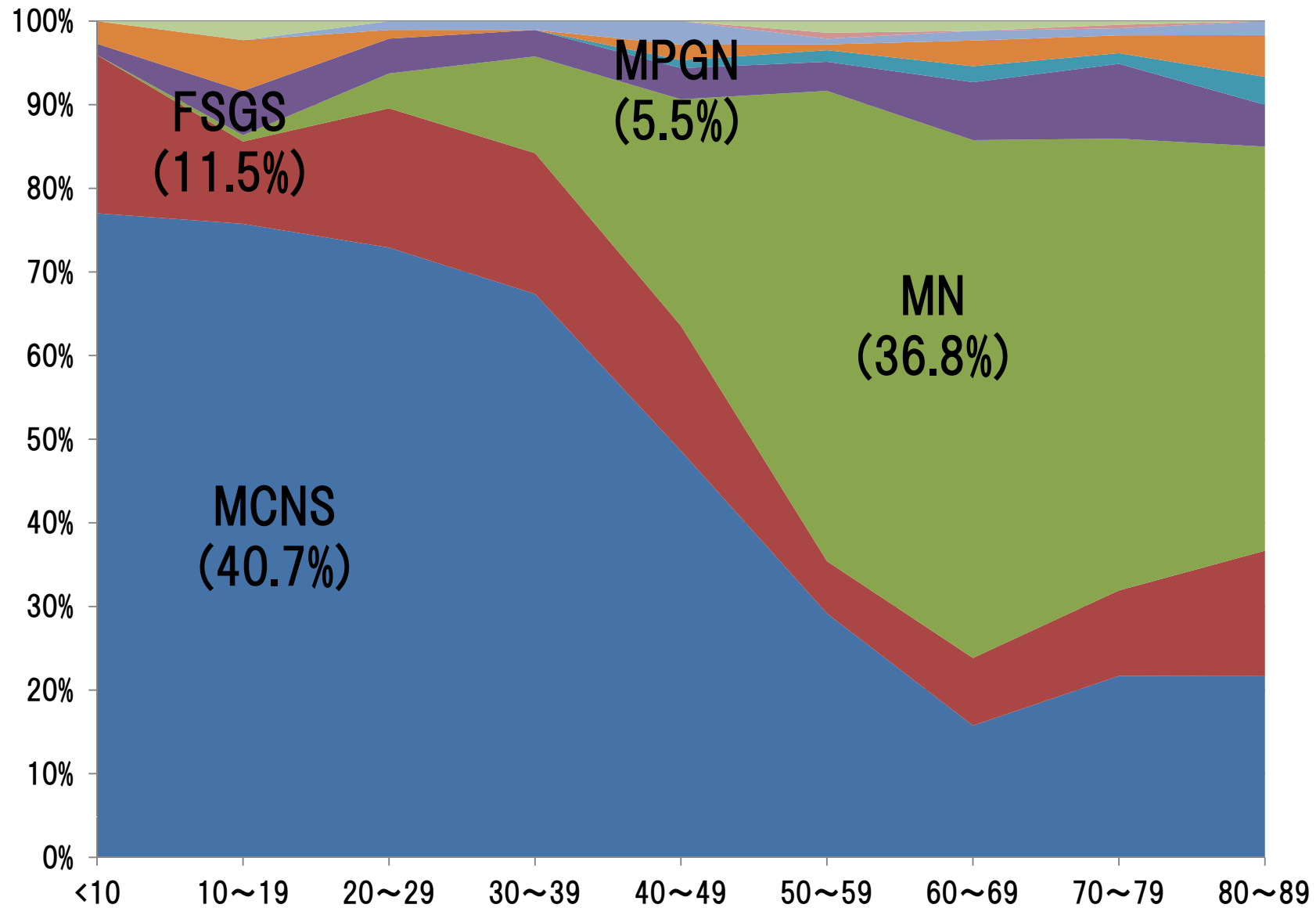


- Mesangial proliferative glomerulonephritis
- Membranous nephropathy
- Minor glomerular abnormalities
- Crescentic and necrotizing glomerulonephritis
- Nephrosclerosis
- Focal segmental glomerulosclerosis
- Membranoproliferative glomerulonephritis type I & III
- Chronic tubulointerstitial nephropathy
- Sclerotic glomerulonephritis
- Endocapillary proliferative glomerulonephritis
- Acute tubulointerstitial nephropathy
- Acute tubular necrosis
- Dense deposit disease
- Transplanted kidney
- Others

# Primary Nephrotic syndrome (J-RBR 2007-2010 n=1,023)



# Primary Nephrotic syndrome (J-RBR 2007-2010 n=1,023)



## Japan Renal Biopsy Registry and Japan Kidney Disease Registry: Committee Report for 2009 and 2010

Hitoshi Sugiyama · Hitoshi Yokoyama · Hiroshi Sato · Takao Saito · Yukimasa Kohda · Shinichi Nishi · Kazuhiko Tsuruya · Hideyasu Kiyomoto · Hiroyuki Iida · Tamaki Sasaki · Makoto Higuchi · Motoshi Hattori · Kazumasa Oka · Shoji Kagami · Tetsuya Kawamura · Tetsuro Takeda · Hiroshi Hataya · Yuichiro Fukasawa · Atsushi Fukatsu · Kunio Morozumi · Norishige Yoshikawa · Akira Shimizu · Hiroshi Kitamura · Yukio Yuzawa · Seiichi Matsuo · Yutaka Kiyohara · Kensuke Joh · Michio Nagata · Takashi Taguchi · Hirofumi Makino · Committee for Standardization of Renal Pathological Diagnosis and Committee for Kidney Disease Registry, Japanese Society of Nephrology, Japan

Received: 30 July 2012 / Accepted: 18 November 2012  
© Japanese Society of Nephrology 2013

**Abstract** The Japan Renal Biopsy Registry (J-RBR) was started in 2007 and the Japan Kidney Disease Registry (J-KDR) was then started in 2009 by the Committee for Standardization of Renal Pathological Diagnosis and the Committee for the Kidney Disease Registry of the Japanese Society of Nephrology. The purpose of this report is to describe and summarize the registered data from 2009 and 2010. For the J-KDR, data were collected from 4,016 cases,

including 3,336 (83.1 %) by the J-RBR and 680 (16.9 %) other cases from 59 centers in 2009, and from 4,681 cases including 4,106 J-RBR cases (87.7 %) and 575 other cases (12.3 %) from 94 centers in 2010, including the affiliate hospitals. In the J-RBR, 3,165 native kidneys (94.9 %) and 171 renal grafts (5.1 %) and 3,869 native kidneys (94.2 %) and 237 renal grafts (5.8 %) were registered in 2009 and 2010, respectively. Patients younger than 20 years of age comprised 12.1 % of the registered cases, and those 65 years and over comprised 24.5 % of the cases with native kidneys in 2009 and 2010. The most common clinical diagnosis was chronic

---

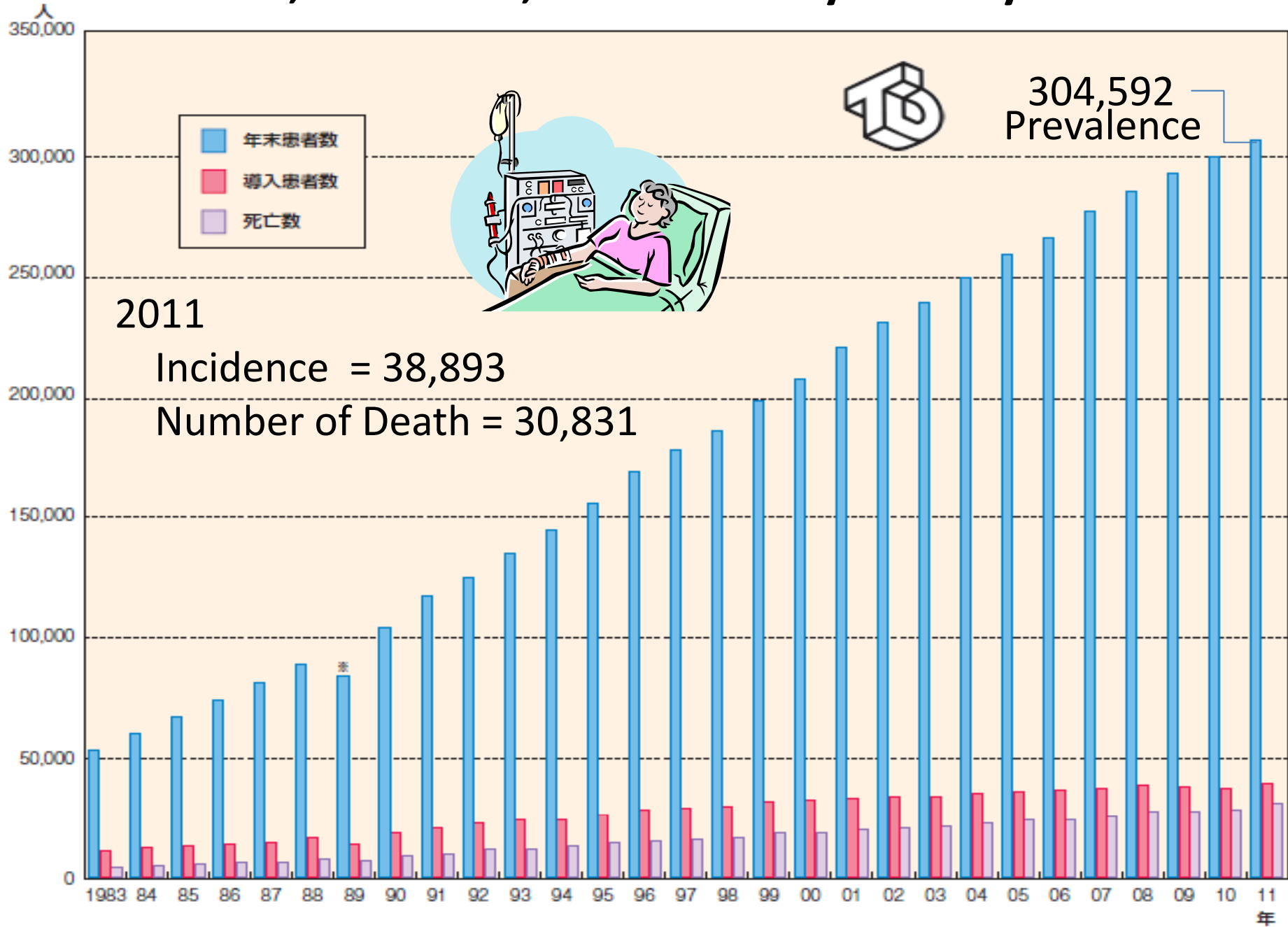
**Electronic supplementary material** The online version of this article (doi:[10.1007/s10157-012-0746-8](https://doi.org/10.1007/s10157-012-0746-8)) contains supplementary material, which is available to authorized users.



A photograph of a mountain peak with the sun rising behind it, reflected in a body of water. The sun is positioned directly behind the mountain's peak, creating a bright glow and lens flare. The water in the foreground is dark, with a shimmering reflection of the sun. A line of dark evergreen trees is visible in the middle ground, silhouetted against the sky. The sky is a pale, clear blue.

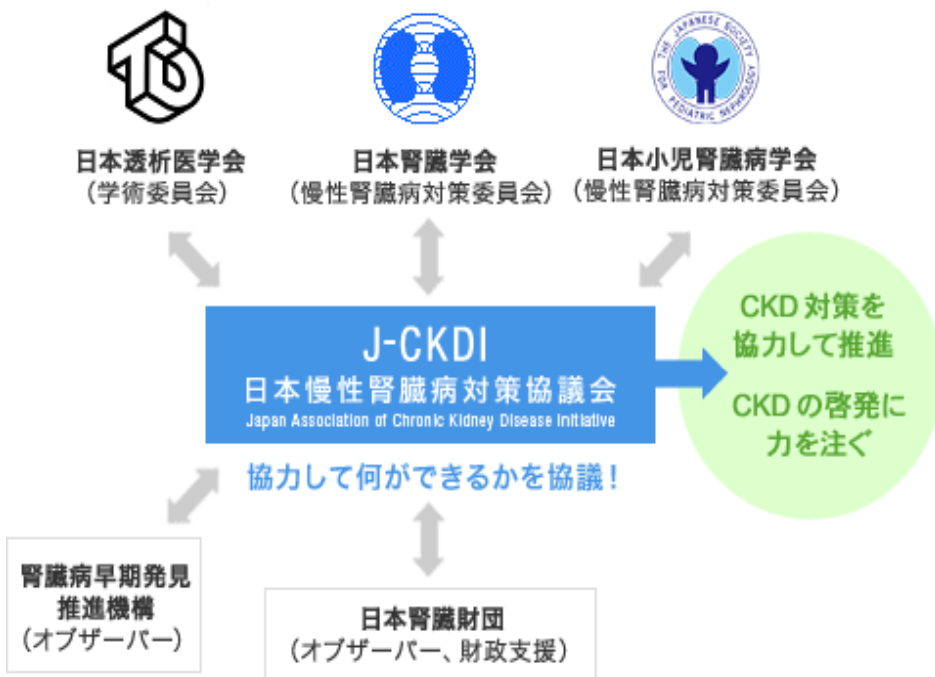
**Coping with pandemic CKD**

# Prevalence, Incidence, and Mortality of Dialysis Patients



# J-CKDI 日本慢性腎臓病対策協議会

Japan Association of Chronic Kidney Disease Initiatives



※各組織のカッコ内はCKD対策に対応する委員会組織を示す。

- ・各コア学会団体は、CKD対策を推進することを目的に、平等な立場で参加。
- ・各組織が持っているリソースを提供して、協力してCKD対策の推進にあたる。
- ・当面は、社会や行政、市民、他団体・学会、保健者、患者などにCKD対策の重要性を啓発する活動を行う。

## 賛同団体

日本医師会 <http://www.med.or.jp/>

日本内科学会 <http://www.naika.or.jp/>

日本糖尿病学会 <http://www.jds.or.jp/>

日本痛風・核酸代謝学会 <http://www.tukaku.jp/>

日本肥満学会 <http://wwwsoc.nii.ac.jp/jasso/>

日本循環器学会 <http://www.j-circ.or.jp/>

日本高血圧学会 <http://www.jpns.org/>

日本動脈硬化学会 <http://jas.umin.ac.jp/>

日本泌尿器科学会 <http://www.urol.or.jp/>

日本臨床腎移植学会 <http://www.jsrct.jp/>

日本小児腎不全学会

日本腎不全看護学会 <http://www11.ocn.ne.jp/~jann1/>

日本薬剤師会 <http://www.nichiyaku.or.jp/>

日本病院薬剤師会 <http://www.jshp.or.jp/>

日本腎臓病薬物療法学会 <http://jsnp.kenkyuukai.jp/special/?id=1210>

日本産業衛生学会 <https://www.sanei.or.jp/>

日本人間ドック学会 <http://www.ningen-dock.jp/>

東京都予防医学協会 <http://www.yobouigaku-tokyo.or.jp/>

日本臨床検査医学会 <http://www.jscp.org/>

日本臨床化学会 <http://www.jscc-jp.gr.jp/>

日本臨床検査自動化学会 <http://www.jscla.com/>

日本栄養改善学会 <http://www.jade.dti.ne.jp/~kaizen/>

日本病態栄養学会 <http://www.eiyou.gr.jp/>

全国腎臓病患者協議会 <http://www.zik.or.jp/>

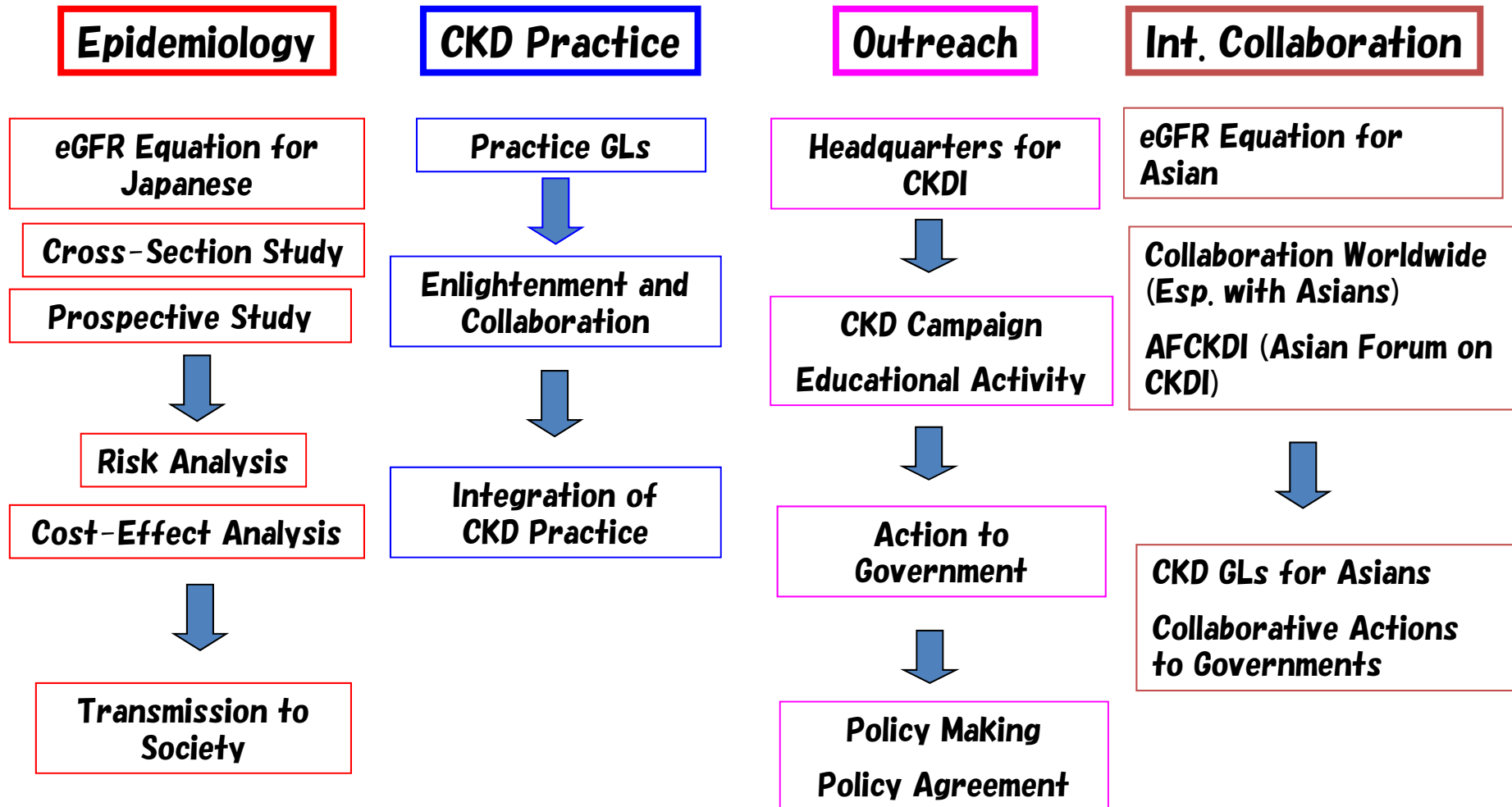
NPO法人腎臓サポート協会 <http://www.jin-support.org/>

日本透析医会 <http://www.touseki-kai.or.jp/>

(※順不同)

# CKDI Plan Proposed for JSN at 2004

---



# Objectives at Second Stage

---

1. Development of A New CKD Classification
  - (1) Heat Map Classification
  - (2) Targeting of CKD Management
  
2. Establishment of CKDI Network Corresponding with Aged Society
  - (1) Effective Use of ICT
  - (2) Cultivation of Nephrologists and Related Health Care Workers
  - (3) Organization of Various Facilities for Effective Care
  
3. Establishment of CKD Database and Its Use
  - (1) Disease Registration on The Web
  - (2) Epidemiological and Clinical Study (FROM-J、CKD-JAC)
  
4. Action to The Society, Government, and The World
  - (1) CKD Campaign and Permeation of eGFR
  - (2) Promotion/Implementation of CKDI by the Whole Society
  - (3) International Activity: AFCKDI, Collaboration with ISN/APSN
  
5. Development of Novel Biomarkers and Therapeutic Measures

2007

Clinical Practice Guidebook for Diagnosis and Treatment of Chronic Kidney Disease

東京医学社

CKD  
日本腎臓学会編

2009

CKD

2012

東京医学社

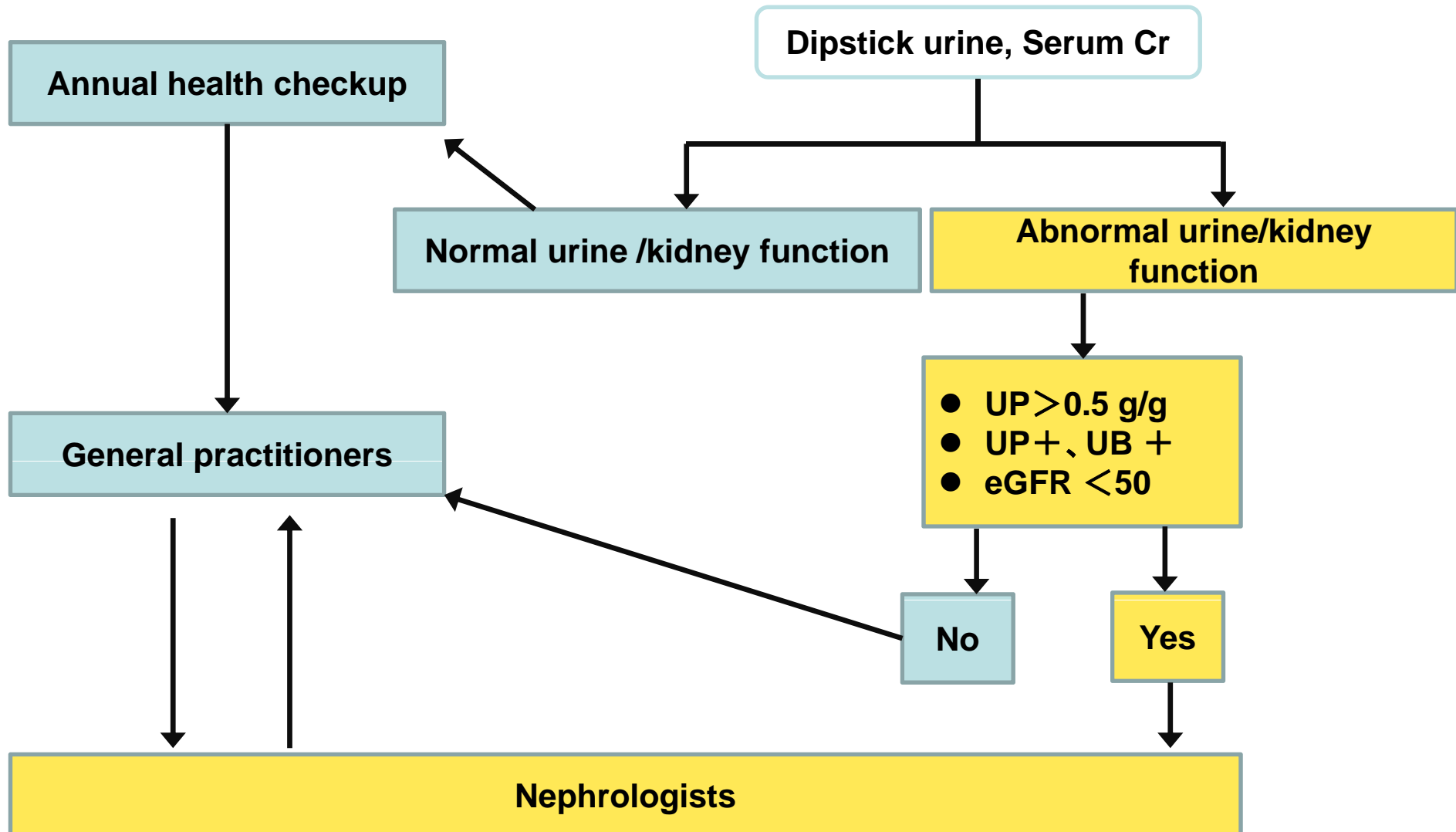
Clinical Practice Guidebook for Diagnosis  
and Treatment of Chronic Kidney Disease  
2012



日本腎臓学会編

# CKD診療ガイド 2012

# Cooperation with general practitioners





**Prospective cohort study**





# Frontier of Renal Outcome Modifications in Japan (MHLW Strategic Research Program)

## Objective

Prevention of CKD patients from Progression to ESRD by Collaborative Practice between Nephrologists and Private Physicians

## Quantitative Goal

15 % reduction of new HD patients compared to the estimated number in 5years.

## Study period

2008.4~2014.3

## Principal Endpoint

- 1.Continue of Visit to Physiscian
2. Integration of CKD Practice
- 3.Advancement of CKD Stage

## Secondary Endpoint

1. Proportion of Achieved Targets
2. Achievement Rate of 50% Reduction of UP
3. Number of Patients with Doubling sCr or ESRD
4. Number of Newly Dialyzed Patients
6. CV Events

## Patients

40~75 years, CKD stage 1,2 (PU+), 3, 4, 5  
CKD3 : UP(+) + DM and/or HT

## Number

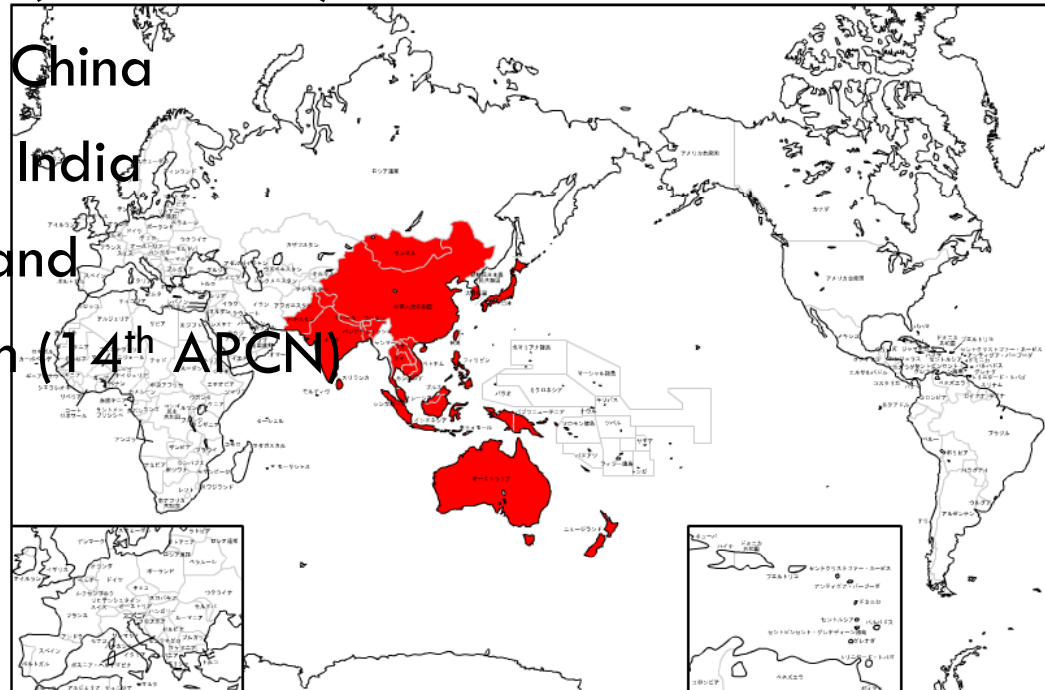
2,500: cluster randomization



# Global Outreach of the JSN

# Asian Forum of CKD Initiative -AFCKDI-

- 2007.5 Hamamatsu, Japan (50<sup>th</sup> JSN)
- 2008.6 Kuala Lumpur, Malaysia (11<sup>th</sup> APCN)
- 2009.4 Kaohsiung, Taiwan
- 2010.6 Seoul, Korea (12<sup>th</sup> APCN)
- 2011.3 Guangzhou, China
- 2012.2 Chandigarh, India
- 2013.8 Pataya, Thailand
- 2014.5 Tokyo, Japan (14<sup>th</sup> APCN)



# Mission of the AFCKDI



- **In Asia-Pacific region,**
  - **Developing a consensus at a protocol of CKD detection and management.**
  - **Analyzing risk factors and cost effective evaluation of intervention.**
  - **Establishing a network on CKD Initiative.**
  - **Contribution to global initiative by using our resources.**

# AFCKDI Workgroup Initiatives since 2008

- **WG 1: Validation of GFR estimation and Cr standardization in Asian pacific**
  - ▣ Co-chairs: Li Zuo (China) & Masaru Horio (Japan)
  - ▣ Secretariat: Yoshinori Yasuda (Japan)
- **WG 2: Pan Asian CKD Registry and Risk Analysis**
  - ▣ Co-chairs: Vivekanand Jha (India)& Kunitoshi Iseki (Japan)
- **WG 3: Asian Best Practice CKD Guideline**
  - ▣ Chair: Philip KT Li (Hong Kong)
- **WG 4: AFCKDI Website as a portal for CKD initiative in Asia Pacific area**
  - ▣ <http://www.asian-pacific-ckd.com>
  - ▣ Chair: Robyn Langham (Australia)



# 7<sup>th</sup> Meeting of the Asian Forum of CKD Initiative



**August 2-3, 2013**

**Pattaya, Thailand**

[www.nephrothai.org](http://www.nephrothai.org)

# **Asia Young Nephrologists Seminar (JSN-AYNS)**

- **Started in 2010 when APCN2014 was decided to be held in Tokyo to promote the invitation from Asian Pacific region**
- **Especially young nephrologists are encouraged to present papers**
- **Recently, it is becoming more important in communication with ISN Council members including Prof. John Feehally and Prof. David Harris**

## JSN-Asia Young Nephrologists Seminar (JSN-AVNS) 2011

**Chairman of Committee**  
Sadayoshi Ito

**Advisory Committee**  
Hiroaki Ogata  
Yasuhiro Imai

**Scientific Committee**  
Akira Nishiyama  
Takefumi Mori  
Atsuhiko Ichihara  
Masahiko Yanagita  
Seiji Ueda  
Motoko Yanagita  
Hiroaki Ogata  
Yusuke Suzuki  
Hiroshi Kawaguchi  
Yusuke Suzuki  
Hiroaki Ogata  
Shoichi Maruyama  
Yoshinari Yasuda  
Eisei Sohara  
Hitoshi Sugiyama  
Katsuhiko Asanuma  
Takayuki Hamano  
Shinichi Uchida  
Minoru Sato  
Tsuneo Konta  
Yohei Maeshima

**International Scientific Committee**  
Moc  
Qian  
Si-Y  
Hun  
Sub  
Hart  
Ngu  
Lin  
Phil

**Secretariat**  
Hitoshi Suzuki

**Secretarial Office**  
Dept  
Med  
2-5-  
Phot  
E-m

## JSN-Asia Young Nephrologists Seminar (JSN-AVNS) 2011

**Chairman of Committee**  
Sadayoshi Ito

**Scientific Committee**  
Akira Nishiyama  
Kenichiro Kita  
Masaomi Nangaku  
Takefumi Mori  
Atsuhiko Ichihara  
Seiji Ueda  
Motoko Yanagita  
Hiroaki Ogata  
Yusuke Suzuki  
Hiroshi Kawaguchi  
Shoichi Maruyama  
Yoshinari Yasuda  
Eisei Sohara  
Hitoshi Sugiyama  
Katsuhiko Asanuma  
Takayuki Hamano  
Shinichi Uchida  
Minoru Sato  
Tsuneo Konta  
Yohei Maeshima  
Takashi Wada  
Mitsuru Oishi  
Takafumi Okuyama  
Kei Fukami  
Keiju Hiromura  
Akito Maeshima  
Hirofumi Hironaka  
Hiroshi Morimoto  
Junichi Yatabe  
Hitoshi Suzuki  
Kengo Furuichi  
Reiko Inagi

**Secretarial Office**

3-28-8 Hongo, Bunkyo-ku, Tokyo 113-0033 Japan  
TEL : +81-3-5842-4131/FAX : +81-3-5802-5570  
E-mail : jsn54@umin.ac.jp  
URL : <http://square.umin.ac.jp/jsn54/>

## JSN-Asia Young Nephrologists Seminar (JSN-AVNS) 2011

**Chairman of Committee**  
Ito, Sadayoshi Tohoku University

**Scientific Committee**  
Asanuma, Katsuhiko Juntendo University  
Hamano, Takayuki University of Fukuoka  
Ichihara, Atsuhiko Tokyo Women's University  
Kitamura, Kenichiro Kumamoto University  
Maeshima, Yohei Okayama University  
Mori, Takefumi Tohoku University  
Nangaku, Masaomi University of Tokyo  
Nishiyama, Akira Kagawa University  
Ogata, Hiroaki Showa University  
Suzuki, Yusuke Juntendo University  
Ueda, Seiji Kurume University  
Wada, Takashi Kanazawa University  
Yanagita, Motoko Kyoto University  
Yasuda, Yoshinari Nagoya University

**Secretarial Office**  
3-28-8 Hongo, Bunkyo-ku, Tokyo 113-0033  
TEL : +81-3-5842-4131/FAX : +81-3-5802-5570  
E-mail : jsn55@umin.ac.jp/URL : <http://square.umin.ac.jp/jsn55/>

Okayama University  
Fukushima Medical University  
Juntendo University  
Kanazawa University  
University of Tokyo

## JSN-Asia Young Nephrologists Seminar (JSN-AVNS) 2011

### - PROGRAM -

May 9 (Thu), 2013, 15 : 30-18 : 55  
Tokyo International Forum, G409

15 : 30 - 15 : 40 **Opening Remarks**  
Yasuhiko Tomino (Congress President of the 56th Annual Meeting of the Japanese Society of Nephrology/President of the 14th Asian Pacific Congress of Nephrology/Division of Nephrology, Department of Internal Medicine, Juntendo University Faculty of Medicine)

15 : 40 - 18 : 45 **Plenary Session** (10 minutes presentation + 5 minutes discussion)  
**Chairs:** Masaomi Nangaku (Division of Nephrology and Endocrinology, The University of Tokyo School of Medicine)  
Akira Nishiyama (Department of Pharmacology, Kagawa University)

**1. Association of Fluid Overload with Renal Outcome in Chronic Kidney Disease**  
Yi-Chun Tsai<sup>1</sup>, Mei-Chuan Kuo<sup>2</sup>, Szu-Chia Chen<sup>2</sup>, Shang-Jyh Hwang<sup>3</sup>, Hung-Chun Chen<sup>1,2</sup>  
<sup>1</sup>Division of Nephrology, Department of Internal Medicine, Kaohsiung Medical University Hospital  
<sup>2</sup>Faculty of Renal Care, Kaohsiung Medical University  
<sup>3</sup>Department of Internal Medicine, Kaohsiung Municipal Hsiao-Kang Hospital, Kaohsiung, Taiwan

**2. The association between glomerular filtration rate estimated by multiple methods at dialysis commencement and patient survival in the IDEAL trial**  
Muh Geot Wong<sup>1</sup>, Carol A Pollock<sup>2</sup>, Bruce A Cooper<sup>3</sup>, Pauline Branley<sup>4</sup>, John F Collins<sup>5</sup>, Jonathan C Craig<sup>6</sup>, Joan Kesselhut<sup>7</sup>, Grant Luxton<sup>8</sup>, Andrew Pflanze<sup>9</sup>, David C Harris<sup>10</sup>, David W Johnson<sup>11</sup>  
<sup>1</sup>Department of Renal Medicine, Royal North Shore Hospital, Sydney Medical School, University of Sydney, Australia  
<sup>2</sup>Monash Medical Centre and Eastern Health Renal Units, Melbourne, Australia  
<sup>3</sup>Department of Medicine, University of Auckland, Auckland City Hospital, Auckland, New Zealand  
<sup>4</sup>Department of Nephrology, Children's Hospital at Westmead, Sydney School of Public Health, University of Sydney, Australia



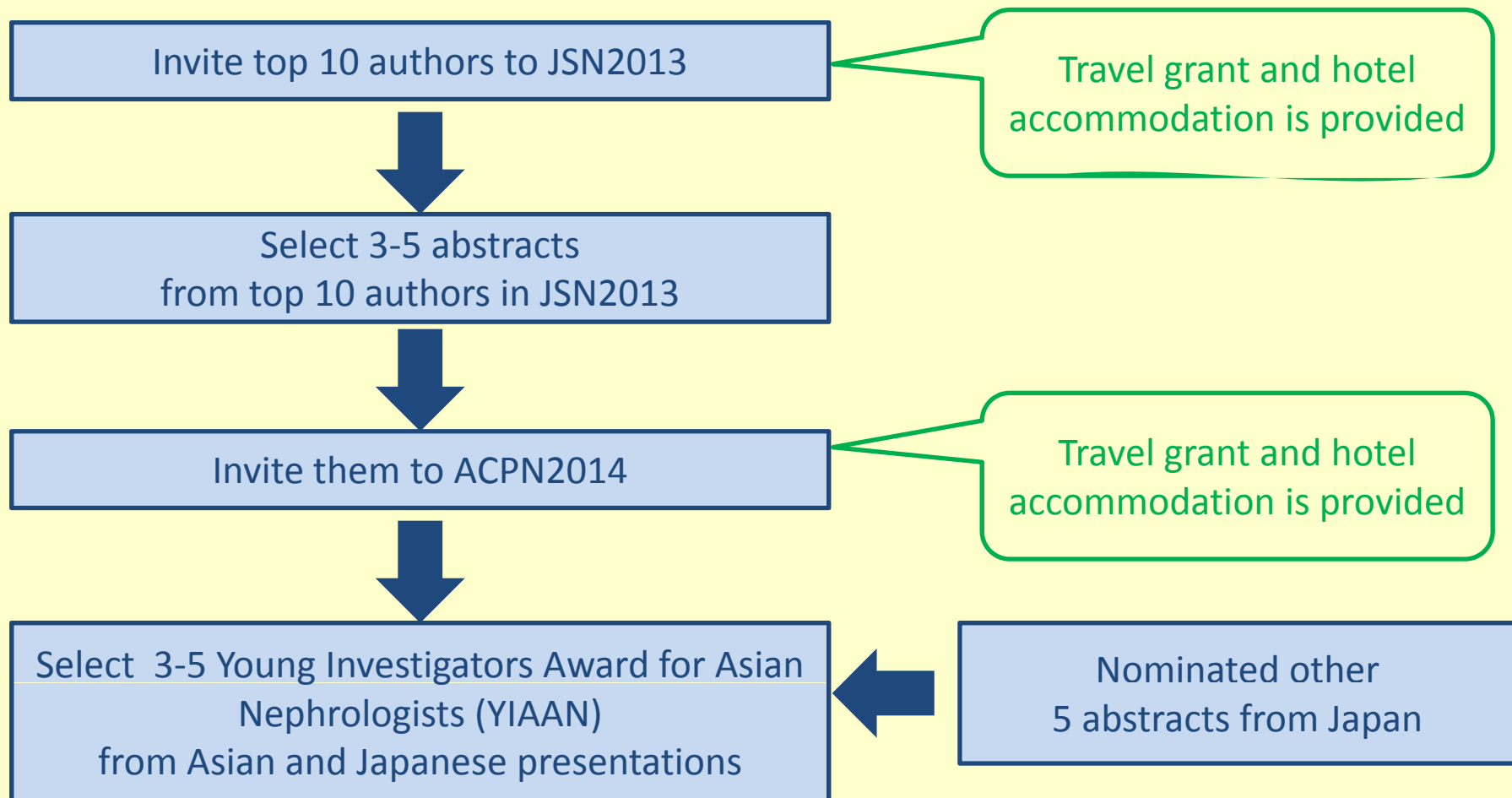
# JSN2013 and APCN2014 Cooperative Project

Calling abstracts for the 56th Annual Meeting of the Japanese Society of Nephrology (JSN2013) from young investigators in many Asian countries.


All the submitted abstracts will be reviewed and selected top 10 abstracts.


Selected top 10 authors are invited to JSN2013 and make both oral and poster presentation.

JSN will select 3 to 5 abstracts out of the top 10 and will invite the authors to APCN2014.



# JSN2013 and APCN2014 Cooperative Project

 **The 56th Annual Meeting  
of the Japanese Society of Nephrology**



**仁 - JIN -**  
I exist as you exist, with a heart  
that considers and cherishes others

**Internationalization and  
Localization of Nephrology**

**Date: May 10 (Fri) - May 12 (Sun), 2013**  
**Venue: Tokyo International Forum**  
**Congress President: Professor Yasuhiko Tomino**  
Juntendo University Faculty of Medicine

View of Juntendo Hospital from Holy Resurrection  
Cathedral in Tokyo (Nicolai-do), 1891

Ochanomizu, Tokyo in 1897

[URL] <http://jsn56.umin.jp/en/>



**APCN**  
**2014** **MAY**  
**14-17**

**The 14th Asian Pacific Congress of Nephrology 2014 in Tokyo**  
Japanese Society of Nephrology

**Venue**  
Shinagawa Prince Hotel

**President**  
**Yasuhiko Tomino**  
(Juntendo University Faculty of Medicine)



[URL] <http://www.mtoyoy.jp/apcn2014/>



**Contribution to APSN activities**

# Asian Integrated Nephrology Forum (AINF)

- **Started in 2001 originally proposed by Prof. Tomino to dispatch a lecturer to developing countries.**
- **60 times until now (av. 5-6 per year)**
- **Indonesia 20**  
**Taiwan 10**  
**China 10**  
**Vietnam 5**  
**Malaysia 4**  
**Bangladesh 3**



# APSN CME (present)

## **Mission:**

In order to increase the level of medicine of the nephrologists in Asian Pacific area, continued medical education (CME) are strongly recommended. The topics of the CME lecture will be presented at the time of annual APSN meeting on site or on web in later.

## **Goal:**

- To increase the level of nephrology in all the area of Asian Pacific regions
- To distribute the recent knowledge of the pathophysiology and treatments of the diseases related to the nephrology and urology in adults and children.
- To exchange the nephrology-related issues occurring in any countries located in Asia Pacific areas and to help resolve the problems.

# APSN CME (cont'd)

## Strategy:

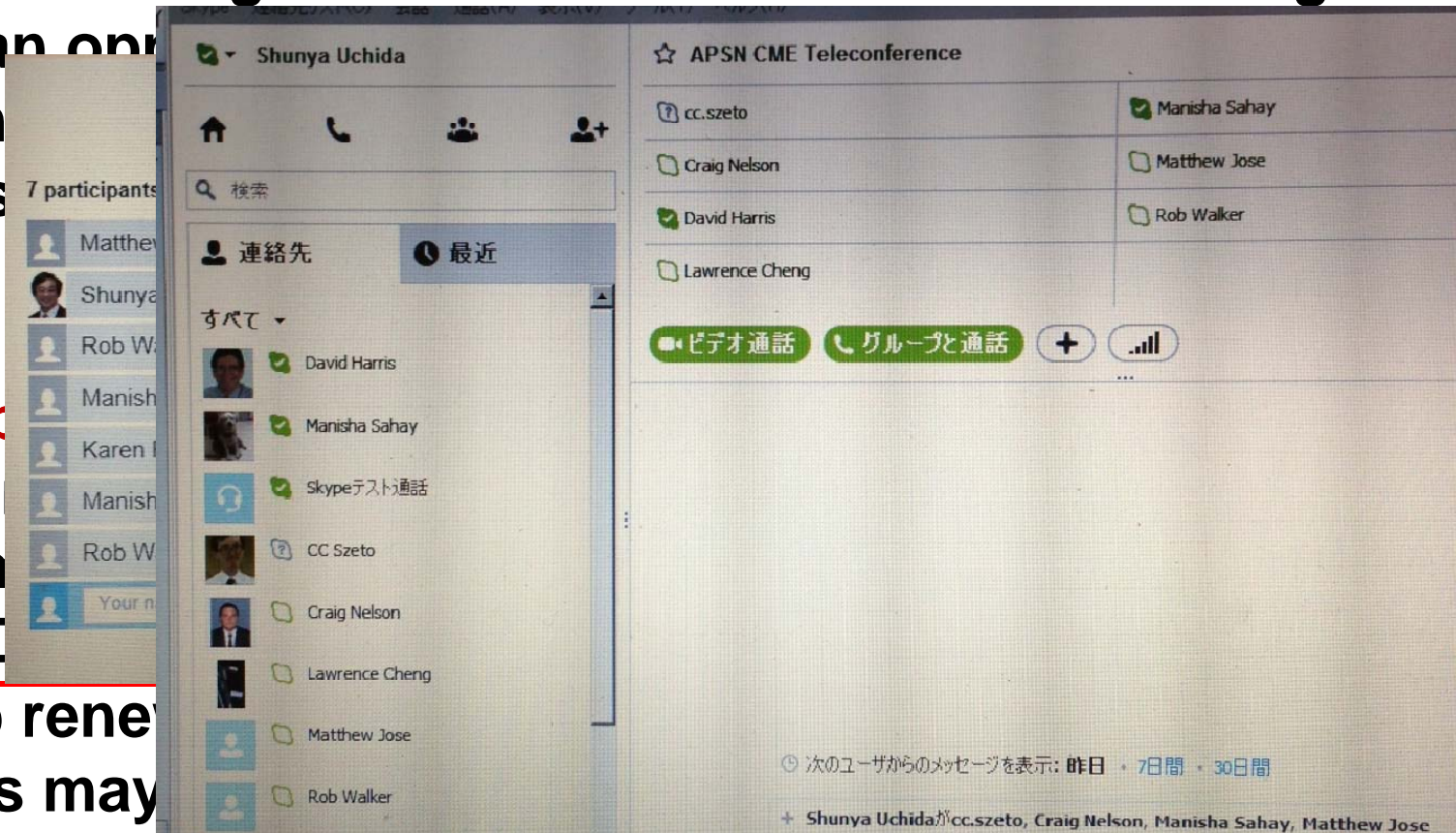
- To keep executing the CME session in Annual meeting APSN
- To have an online annual meeting in all countries
- To renew

## Issues to be

- a) To better the communication such as [

- b) To keep renewing the pages may

reports and scientific progress in nephrology by transporting ISN web pages.



Aiming at the summit of Nephrology in  
collaboration with ISN/ASN/APSN !

